



# The *Gamblewood Gazette*

Our Community's Newsletter

## Summer 2010 Edition

### Special Interest Articles:

- Annual Meeting & BBQ, Saturday, June 12, starting at 1 PM with Live Music!
- Earth Day Pick Up a Success
- Agenda Preview for this Year's Annual Meeting
- Home Owner's Dues are due in June
- Dog Clean-up Bag Stations in Place
- Community Concerns & Garage Sale -7/17
- Late Fee Change/ Fireworks Ordinance
- "Kingston Greens" to open soon.
- Gamblewood Businesses/ Classified Ads

### Additional Highlights:

- Tidbits
- Pet Picture of the Month
- Bird Sightings

Editor: Diane Green  
Photos: Diane Green

## Annual Meeting and BBQ – June

Saturday, June 12, 2010 ~ BBQ at 1PM~ Meeting at 2 PM

### "Contact Us" available

on our website. Go to:  
[www.gamblewood.org](http://www.gamblewood.org)  
See, "Tidbits" on Page 7 for more information and details.

We are all very excited about this year's Annual Meeting that will take place on Saturday, June 12<sup>th</sup> at the Beach Front Park. Not only will there be a free BBQ for everyone who lives in Gamblewood (renters too) but there will be live entertainment by "Dogfish Creek & Friends".

There will be plenty of Hamburgers, Hot Dogs, snacks, water and pop for the whole family. We encourage the kids to **bring their kites** to play with!

There is no obligation to stay for the meeting but everyone is welcome to stay. In order to vote you must be a lot owner and your dues must be paid in full. Dues can be paid at the meeting. If you cannot attend you can give your voting proxy to a neighbor.

This year's agenda (see page 2 for details) includes many of your concerns for discussion and vote. Bring your ideas and suggestions. Come and meet your neighbors!



'09 BBQ Chefs Donna & Amy

**BBQ @ 1, Meeting @ 2PM**

### Earth Day Clean Up a Success!

Volunteers met at the Play Park on Saturday morning on the 24<sup>th</sup> and covered a good portion of Gamblewood – "many hands make light work". We hope for an even greater turnout next year; it is a fun family event!



Parade of Earth Day Helpers



Jodie Newman



L to R; Phil Elena, Jane Maas, Bob Green, Beth B. Jodie Newman, Evy & Gus Holstein, Ron Muell



Cory Newman

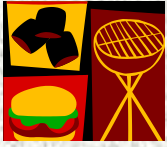


Ron Muell

Don Lindsey volunteered labor & parts to do repairs



Mae & Jane



## 2010 Annual Meeting Info & Agenda

### ANNUAL MEETING: A Few Things to Keep in Mind

#### Dues Notices:

Dues notices were sent out in the second half of May, so please be sure and watch for them and either pay before the meeting or bring payment with you **so that you can vote**.

#### Notes:

The 'New Business' part of the meeting is when you as homeowners have an opportunity to bring up concerns/projects that you would like to see happen in Gamblewood. With this in mind please give some thought to what you would like to see in your community.

Please consider leading your community and volunteering for the Board. Two **positions are up for renewal and one position is open**. Call (800) 642-8169 and leave a message if you have any questions.

#### Food For Thought

Here is a list of items slated for discussion at the meeting:

- ◆ Repair of beach structures over the picnic tables.
- ◆ Ideas for new capital improvements.
- ◆ Bylaws – We have requested that our attorney look for document inconsistencies, prepare a Restated By-Laws document and prepare a summary letter that will be presented to the membership when available. This process is complex due to numerous changes made over the years.

Please note that this is not a complete list but a sampling of some items of interest.

## 2010 Homeowners Dues are Due By June 12th

Summer is a busy time but we wanted to remind you that your Gamblewood Community Club homeowner's dues are due by June 12, 2010. The dues are only \$50.00 per year and if you look at the *Treasurer's Report* you can see some of the things they are used for.

#### WHAT YOUR DUES, DO FOR YOU:

- Gamblewood Community Club's, "Articles of Incorporation" have been combined as one document and will soon be recorded by the State.
- In 2009 the community has voted to use some of our reserve money to purchase \$5,000 worth of playground equipment for the Beach Park and for subsequent years as well as long as the funds are available. In 2010 a new climbing structure was installed at the Beach Park with the help of the Eagle Scouts, in particular Jake Kvistad.
- Maintenance and upkeep of the Beach and Play Parks. Three new dog "poop" pick up bag stations installed,
- Working with attorney to update our governing documents,
- Christmas lighting contest winner donations to local charities,
- Swing, fence repairs, park and toy maintenance and
- Clean up of Gamblewood entrance and other needs as they arise.



If you have some concerns **please call or write to us** and we will deal with your needs on a case by case basis. Yearly homeowner's dues are part of your homeownership agreement to live in Gamblewood. Your payment contributes to making your community a better place to live in. Thanks for your prompt attention. (800-642-8169 and leave a message)

COMMUNITY CONCERNS / NOTICES

CAR BREAK-IN HAS BEEN REPORTED

In April a truck on Woodside Road was vandalized while parked in the driveway. It was entered; the glove box opened and few items were stolen. Please remember to lock your car.

MAILBOXES OPENED

Mailboxes were reported opened along Woodside Road on a morning in April. We believe this as an act of vandalism but could also be connected with identity theft so be sure to collect your mail as soon as you can.

VANDALISM

Vandalism continues to be a problem. Stop signs are being routinely toppled and shot with paint balls; graffiti continues; ripped netting on basketball hoop and tables damaged. Signs of drug use are evident – Patrols are being stepped up. Please remember that the Board is offering a \$200 reward for report of the identity of violators and good neighbors watch out for their good neighbors.

The GCC community wide GARAGE SALE is scheduled for Saturday, July 17, 9:00 AM – 3:00 PM

Items that are big sellers are toys, clothing, yard equipment, tools, and household goods. The board will place ads in the local newspapers, hang the garage sale sign at Highway 104, place notices on local bulletin boards and set out road signs at various intersections.

The GCC community is a great place for buyers to easily go from street to street and for “Gamblewoodians” to check out what their neighbors have to sell. Put up your signs and plan ahead for our July garage sale and prepare for unexpected treasures and pleasures!



DOG CLEAN UP BAGS IN PLACE!

In response to your concerns, the board has purchased and installed 3 dispensers (see pictures). The “DOGI-SPOT” holders dispense plastic bags for your convenience. We placed one at the entrance of the Beach Park (not pictured), one down by the picnic area and one in the Play Park for your use.

We ask that everyone please pick up after their dogs and put the used bags in one of the nearby trash receptacles.

Special thanks to Board Vice President, Tom Twigg for taking on this project and seeing it through.





**Notice about Homeowners Late Fee Change**

**Notice to Gamblewood Community Club members about Late Fee CHANGE**

This letter is to inform you that the Gamblewood Community Club (GCC) Board of Directors has made changes to the way in which late GCC dues are dealt with.

Previously when a member's dues had become 90 days delinquent late fees were added to the amount owed, accruing each month that dues were still outstanding. When a member's total debt to GCC became large and no payment plan had been arranged, GCC would place a lien for the amount owed on the member's property. This tactic has not proved to work particularly well in increasing the percentage of members staying current with their dues while creating a complicated accounting burden on our volunteer Board and in some cases creating an unmanageable debt for property owners.

Henceforth, when a GCC member becomes 90 days delinquent on the current year's dues they will receive notice that a lien will be placed for \$50 (or whatever the current annual dues are at the time) in 30 days unless the member contacts the Board and arranges a payment plan. **No late fees will be assessed going forward.**

It is the intention of the Board in making this change to simplify our dues collection process while not increasing the burden on those who may already be having difficulty making payments. We strongly encourage any GCC member who cannot make the \$50 annual membership dues payment at the time it is due to contact us and arrange a payment plan that you can afford. We will not be placing liens on the property of those who are showing a good faith effort to meet their community obligation.

Homeowner' dues are due by June 12, 2010. You can mail to the following address or bring payment to the Annual Meeting on June 12. Please note that all dues payments and communication to the GCC Board regarding dues should be mailed to GCC, PO Box 69, Kingston, WA 98346.

Sincerely,  
The Gamblewood Community Club Board of Directors

**Kitsap County Fireworks Ordinance**

**10.48.010 Discharge restricted.**

Discharge of consumer fireworks in the unincorporated portion of Kitsap County is **restricted to July 4th between the hours of 11:00 a.m. and 11:00 p.m.** Exception: Discharge by public display may be conducted if permitted and authorized pursuant to Section 10.48.014.

(Ord. 377 (2007) § 1, 2007: Ord. 248 (2000) §1 (part), 2000: Ord. 152-A (1999) § 1, 1999: Ord. 152 (1993) § 1, 1993)

**We ask that Gamblewood residents follow the law as stated above. When finished -- Be Responsible!**

*Clean up all debris* when finished. Duds can be dangerous; if a firework item does not light or fire, an adult should wait five minutes, approach it carefully and place it in a bucket of water. Make sure that used fireworks, matches and lighters are out of sight and reach of children.

For the complete article and more safety tips, go to: <http://www.kitsapgov.com/sheriff/>

## KINGSTON GREENS TO OPEN SOON

"KINGSTON GREENS" a Pro Putt course is expected to open sometime in the beginning of June. The owner, Phil Hoffman reported that the course is designed to hone putting skills for golfers of all ages. Snacks will be available in the office when open, or you can bring a lunch and enjoy relaxing at the picnic tables overlooking the course.

The course is expected to be open 7 days a week with Monday and Tuesday open for private events only. On those days the course can be rented by the hour and catering will be available too. Prices vary according to the number of people participating.



Hours: 9 A.M. - 8 P.M.

Prices: \$5.50 for 18 holes, Wednesday through Friday

\$6.75 for 18 holes, Saturday and Sunday

\$3.00 for children (determined by their ability to use the smaller plastic club)

For more information and details please visit their website at <http://kingstongreens.com/>

We wish them good luck!



Picnic tables overlooking course to enjoy refreshments and take a break



Back of course holes



Over the bridge to 'putt on'

**We want to know about your own family's milestones.**

Send us any news or ideas that we can add to the Newsletter.  
We will post your business Ad and classifieds **free** (see Page 6 for details)

Are you proud of an honor student?

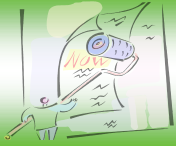
Have you had a new baby?

New to the community? – introduce yourself here.

Do you have some great ideas you want to share?

Send your news via: **E-MAIL: [info@gamblewood.org](mailto:info@gamblewood.org)** or use the contact section on the website at: <http://www.gamblewood.org/> . You can also write to us at:

**Gamblewood Community Club, Box 69 Kinaston, WA. 98346**



**COMMUNITY BUSINESSES/CLASSIFIED**

Some Gamblewood residents that have businesses, or who offer services out of their homes, have asked if they could advertise in the Gazette and/or on our website. The board has decided that we would offer **FREE** advertising to Gamblewood residents who are in good standing. Here are the guidelines:

- ✓ The business has to be a legal business and run out of your home in Gamblewood. You can offer a service that is not done in your home, i.e., lawn service, but the business needs to be run from your home address.
- ✓ The ad should be business card sized and include your name and contact information. You may email or send a digital version of your ad (business card) to: gccboard@gccinfo.org.
- ✓ You may petition the Board if your business office is out of Gamblewood, but you live here.
- ✓ Ads in the Gazette will be on a space available basis. The Board reserves the right to pull or reject questionable ads.

If space available, 2 sides of a card can be displayed.

**YOUR CLASSIFIED ADS HERE - FREE**

**Board Positions**

Two **positions** are up for renewal and one **position** is open.

Call for more information.

**For Sale**

- Have something to sell?
- Post it here!

**HELP WANTED**

Look here to find jobs

## Tidbits. . .

### **Beach Park Gate Reopened in April**

Plan your season of beach fun now. The beach park gates opened for the season on April 15 and will remain open until October 15th.

### **Website is being rebuilt but you can use the “Contact” feature and email us.**

The Gamblewood Community Club website is currently under construction but you can still email us at [info@gamblewood.org](mailto:info@gamblewood.org), or contact us using the “Contact” tab on the website. As you will see there is not much there yet but it will be better than ever once it is reconstructed. Website address is <http://www.gamblewood.org>

## Pet Picture of the Month. . .

Send us a picture of your favorite pet and your pet’s picture can show up here! Cute and funny photos welcome. Also, pictures of birds seen in Gamblewood or the area. Email to the Board at [info@gamblewood.org](mailto:info@gamblewood.org)



## Birds Spotted in Gamblewood. . .

Below is Willow (American) Goldfinch, *Carduelis tristis*, the official bird of Washington since 1951. It is mostly yellow, about 4-5” long and likes open meadows and thistle seed at feeders. To attract this bird to your garden plant grasses and perennial plants such as zinnias, cosmos, bee balm, or globe thistle, which produce the seed heads favored by finches. When not breeding they usually form flocks with other finches.



“This is, “Natalie” hanging out in the back of ‘her’ truck. Natalie is a Weimaraner. According to Eukanuba, Weimaraners are large, distinguished dogs (as you can see) with beautiful lines and defined muscle. The Weimaraner is talented in many areas, including hunting, tracking, retrieving, pointing, watch dogging, guarding, police work, search and rescue, and agility. An intelligent breed, the Weimaraner is quick to learn, eager to please and obedient. This happy, loving and friendly dog enjoys being part of the family; a perfect addition to the family home.

**You can contact us via the Community website at <http://www.gamblewood.org>**

Summer 2010 Edition of the *Gamblewood Gazette* is here. You are invited to  
Attend the Annual Meeting & BBQ on June 12<sup>th</sup> at the Beach Park!



*Gamblewood Community Club*  
*Box 69 Kingston,*  
*WA. 98346*



**PHONE: (800) 642-8169 E-MAIL: [info@gamblewood.org](mailto:info@gamblewood.org) NEW Website: [www.gamblewood.org](http://www.gamblewood.org)**